



# MONTHLY MEMBERSHIP PROGRESS REPORT

Results as of: 2/28/2015

Multiple District 35

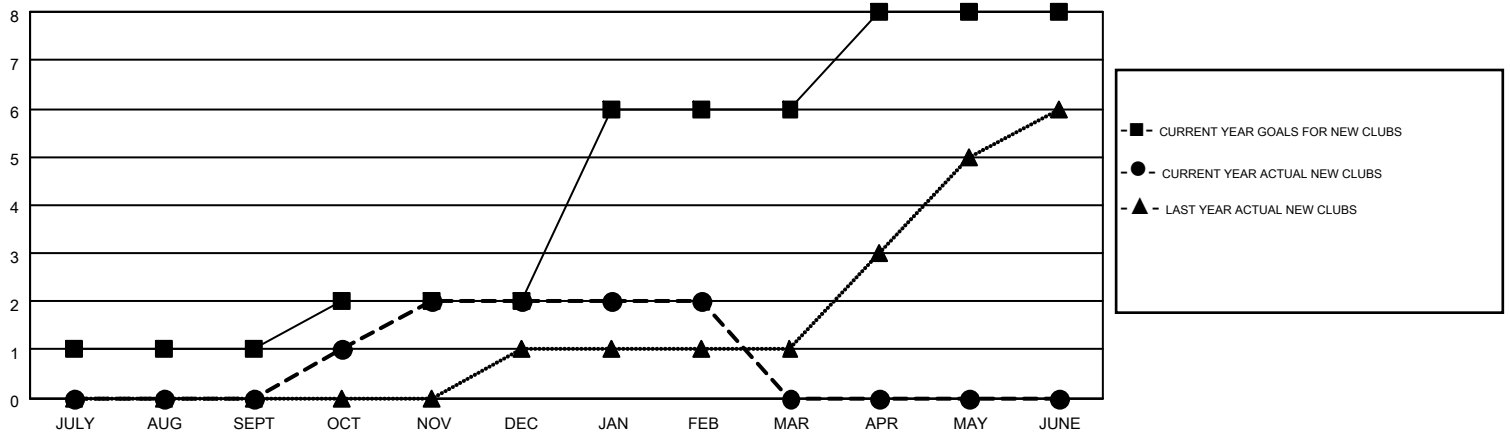
LOCATION: FLORIDA

GMT: CARL HARRELL

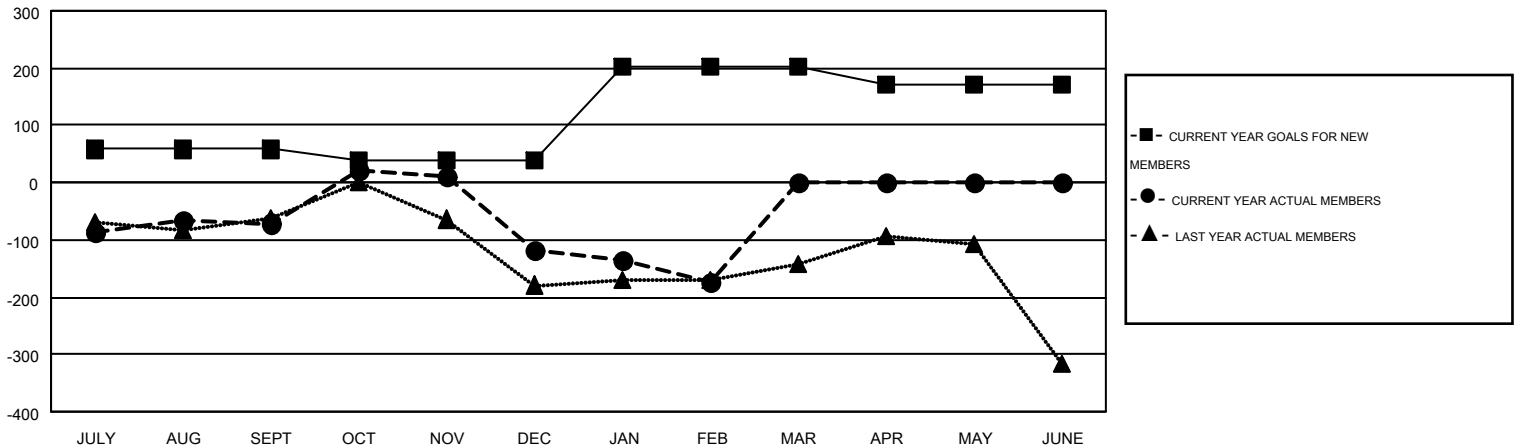
GMT CA 1

Clubs					Members				
RESULTS FOR 2014-2015					RESULTS FOR 2014-2015				
QUARTER	NEW CLUB GOAL	NEW CLUBS	DROPPED CLUBS	NET GAIN/LOSS	QUARTER	NEW MEMBER GOAL	CHARTER AND NEW MEMBERS ADDED	DROPPED MEMBERS	NET GAIN/LOSS
JULY/AUG/SEPT	1	0	3	-3	JULY/AUG/SEPT	58	193	264	-71
OCT/NOV/DEC	1	2	2	0	OCT/NOV/DEC	-20	287	334	-47
JAN/FEB/MAR	4	0	2	-2	JAN/FEB/MAR	164	136	191	-55
APR/MAY/JUNE	2	0	0	0	APR/MAY/JUNE	-30	0	0	0

GOALS AND ACTUAL NEW CLUBS CUMULATIVE



GOALS AND ACTUAL MEMBERS CUMULATIVE



DROPPED CLUBS: 7	158 CLUBS OF 247 ADDED 1 OR MORE NEW MEMBERS	<b>GENDER DISTRIBUTION</b>
		MALE 3,358 (58.57%)
		FEMALE 2,375 (41.43%)
<b>DROPPED MEMBERS</b>	<a href="#">CLICK HERE FOR HEALTH ASSESSMENT DATA</a>	<b>FAMILY UNIT MEMBERS</b> 1,425
DECEASED 64		HEAD OF HOUSEHOLD 686
CLUB CANCELLED 17		NON-HEAD OF HOUSEHOLD 739
OTHER 708		
<b>TOTAL 789</b>		